





Parts Shipped	QTY	Optional Accessories Available	Part #
MCP300 PUMP	1	1/2" Stem to 1/2" tube elbow PI221616S	
Harness, incl. 2 brackets, Velcro strap, & 2 #8 x 1/4" sheet metal screws	1	1/2" Stem to 3/8" tube OD quick connect PI061612S	
Tube Insert for 1/2in. OD Tubing - Part # TSI375S	2	1/2" Stem to 1/2" tube ID hose barb PI251616S	
Quick-connect remove tool	1	1/2" Stem to 3/8" tube ID hose barb PI251612S	

General Use

The MCP300 pump is a magnetically powered centrifugal pump, featuring a watertight synchronous motor. It requires no maintenance when used with de-mineralized water, and the appropriate anti-fungal additives (20% common anti-freeze, or 5% Swiftech's HydrX™, Zerex™ or RedLine™ coolant).

Although this pump is fully submersible, it is configured for inline use rather than submersed. The pump is shipped with built-in anodized aluminum quick-connect fittings for 1/2" OD tubing (3/8" ID), and also supports larger or smaller sizes tubing with optional accessories listed in the table above.

Physical installation

The pump can be installed either:

- Horizontally: using the built-in hinged brackets with suction cups, or
- Vertically: using the provided Velcro harness and brackets.

If the computer is moved, or shipped, we recommend always using the harness for safety, in either horizontal or vertical installation.

Horizontal Installation, using built-in suction cups: unfold the brackets as shown in Figure 1, and place pump in convenient location.

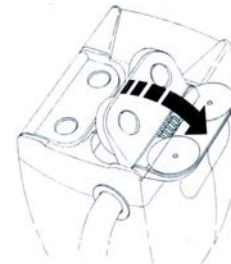


Figure 1

Harness installation (recommended): YOU MUST FIRST REMOVE THE HINGED BRACKETS BY TWISTING THEM GENTLY OUT OF THEIR SOCKET.

- Drill two holes 1/8" in diameter, 1.65" inch apart.
- Install harness with provided screws.
- Peel-off protective paper, and stick provided neoprene pad in between the brackets
- Install pump as shown fig. 3.
- Peel-off protective paper, and fold flap with sticker over top of the pump. Sticker keeps flap in position for next step.
- Apply firm tension on second flap and fold over to finalize installation.
- **Thanks to strong Velcro hold, and neoprene pad, "floating" retention now provides secure and vibration free installation.**



Figure 2



Figure 3



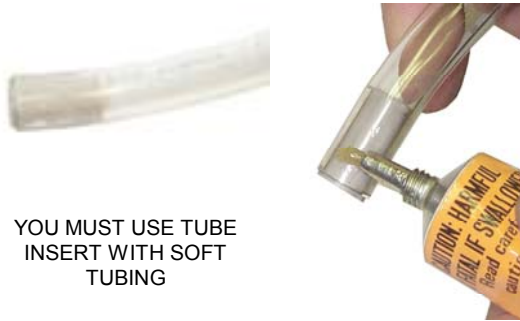
Figure 4

Connecting the tubing

Cut the end of the tubes perfectly square. It is **absolutely imperative** to use the provided tube inserts with clear vinyl (soft) tubing, as shown in figure 5 below. A little bit of grease spread around the perimeter of the tubing as shown in fig. 6 will help insert them into the fittings.

Make sure that the tubes are fully inserted into the fitting. The tip of the plastic tube inserts should be flush with the inlet and outlet openings, as shown in figure 8 below. Inserting the tubes requires a firm push, accompanied by a twisting motion.

Tube removal: Push in collet squarely against face of fitting using the provided quick-connect remove tool as shown below: tube can now be safely pulled out without pushing squarely against the collet.



YOU MUST USE TUBE INSERT WITH SOFT TUBING

Figure 5



Figure 6



Figure 7



Figure 8

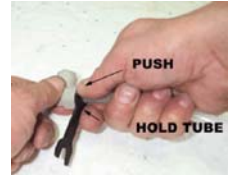
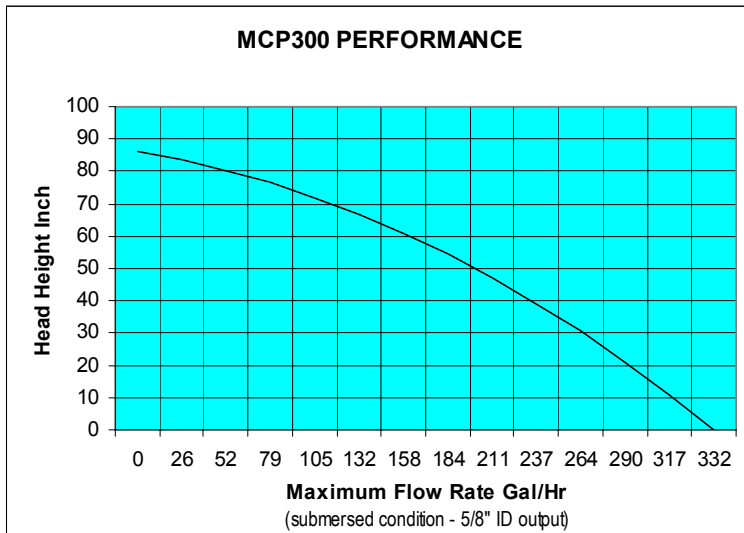
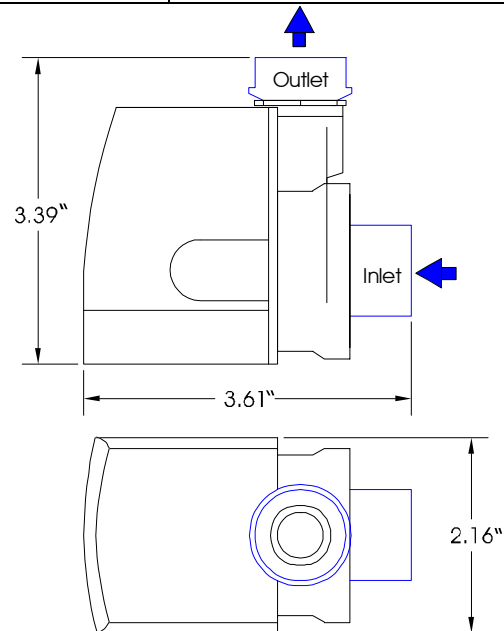


Figure 9

Performance & Specifications



	115 V version	230 V version
Voltage	115 V	230 V
Hz	60	50
RPM	3600	3000
Watts	22	25
Inlet/Outlet OD	1/2"	
Max Head	86" / 220 cm	
Flow L/Hr	400-1300	
Flow Gal/Hr	100-340	
MTBF	50,000 hours	



Replacement parts	
Description	Part #
Pump body – 115 V	MCP300-B115
Pump body – 230 V	MCP300-B230
Inlet fitting	MCP300-IL
Outlet fitting	MCP300-OL
Inlet O'Ring	MCP-90653
Outlet O'Ring	MCP-90651

WARRANTY: This product is guaranteed for a period of **24 months** from date of purchase for defects in material, and workmanship. Guarantee consists in replacing defective parts with new or reconditioned parts. Guarantee is considered void in case of **improper use (*)**, handling or negligence on the part of user. Original invoice showing date and place of purchase is required for exercise of the warranty.

(*) WARNING: DO NOT ATTEMPT TO LEAK-TEST THIS PUMP USING COMPRESSED AIR OR CITY WATER PRESSURE. THIS WILL CAUSE EXCESSIVE INTERNAL PRESSURE, RESULTING IN IMMEDIATE AND IRREVERSIBLE DAMAGE TO THE PUMP, AND VOID YOUR WARRANTY. LEAK-TESTING CAN ONLY BE PERFORMED BY RUNNING THE PUMP ITSELF AND/OR GRAVITY FEEDING THE CIRCUIT. EXCESSIVE INTERNAL PRESSURE CAN ALSO BUILT-UP WHEN USING THERMO-ELECTRIC DEVICES WITHOUT APPROPRIATE COOLING TO THE DEVICE, AND IS NOT COVERED BY OUR WARRANTY.

DISCLAIMER: Swiftech assumes no liability whatsoever, expressed or implied, for the use of this product, and more specifically for any, and all damages caused by the use of this product to any other devices in a personal computer, whether due to product failure, leak, electrical shorts, and or electro-magnetic emissions.