



MAELSTROM 5 1/4" DUAL BAY RESERVOIR SERIES

Installation guide

What is Included in the box:

Qty	Item/Part Number
1	Maelstrom V2 Reservoir including: <ul style="list-style-type: none">• (1) Acrylic reservoir with fill-cap & o-ring, foam insert, s/s mesh• (1) MCP50X built-in pump• (1) G 1/4 plug
4	Installation screws (M3)
1	3mm UV Led & cable with min 3-pin connector
1	Maelstrom Sticker

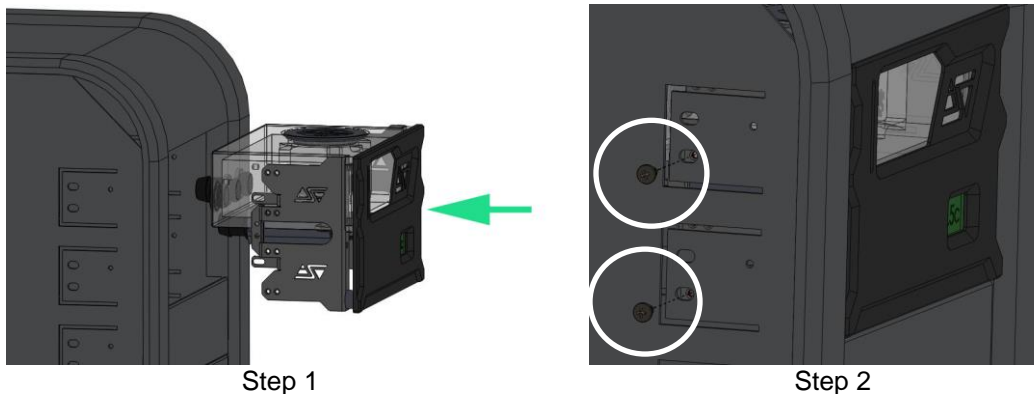
Warning!

Incorrect installation of the fittings may permanently damage the thread of the reservoir ports, and is not covered under our warranty. Please note that fittings should screw freely into a port. Should you feel any resistance in the first turn when beginning to fasten a fitting, then do not attempt to force it! If this happens, back-off the fitting entirely, and screw it back in while making sure that it is being inserted perfectly perpendicular to the port thread.

- **Fittings and plugs fastening torque and procedure:** using a 5/8" socket or a flat wrench, the correct torque in acrylic material is approximately 1/8th of a turn past the point where the body of the fitting has mated finger tight with the reservoir surface.
- **Fill-cap utilization:** simply push on the fill-cap and twist it approximately 1/8 to 1/4 of a turn in any direction to either loosen or fasten it.

1. Installation of the reservoir into the chassis

The Maelstrom series bay reservoirs share the same form factor as internal CD and DVD writers and thus is installed in the same fashion: simply slide it into your chassis from the front, and use the provided M3 screws to fix it in place.



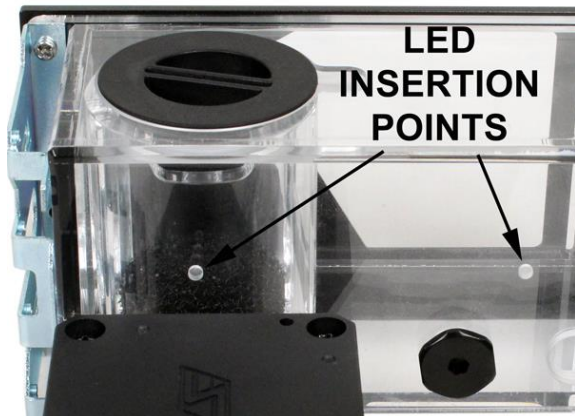
2. Installation tips

- Always secure your fittings to the reservoir prior to install it into the chassis as it will be easier to lock them properly in place.



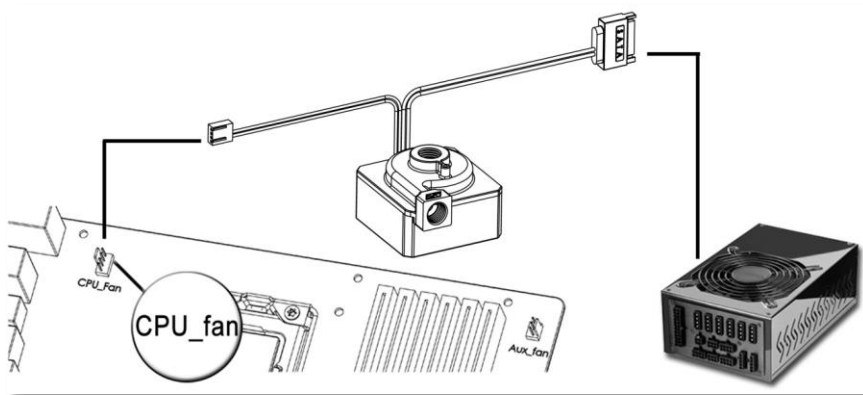
- Always make sure that you have sufficient slack in the tubing coming from your loop so that you can pull the Maelstrom and access the fill-port from the front in order to fill it up with coolant.

3. LED installation



Apply a small drop of cyanoacrylate type of glue (Loctite, Superglue, Krazy glue) (not provided) to the LED body, and immediately insert it in one of the desired holes. We recommend testing the illumination (with coolant) of your preferred location prior to gluing the LED.

4. Pump Electrical connections



5. Coolant: precautions for use

- The recommended coolant is Swiftech's HydrX or HydrX PM. Swiftech's [product warranty](#) does not cover the use of 3rd-party coolants.
- Excessive use of coloring additives and/or UV dyes containing particulate fillers may damage your pump bearing and may void your pump warranty.
- The use of any additive or coolant containing alcohol is prohibited and dangerous: it will result in permanent damage to your acetal reservoir and may result in catastrophic leaks.



6. Pump specifications

Technical Specifications			
Motor type	Electronically commutated, brushless DC motor	Max. pressure	22 PSI (1.5 BAR)
Nominal voltage	12 V DC	Temperature range	Up to 140 °F (60 °C)
Operating voltage range	7 to 13.4 V DC	Electrical power	SATA connector
Max. power (@12 V)	25.8 W	PWM + RPM Signals	4-pin connector
Max. current (@12 V)	2.15 A	RoHS	Compliant
Max. head (@12 V)	15.8 ftH ₂ O (4.8 mH ₂ O)	Port thread standard	G1/4 (1/4" BSPP)
Max. discharge (@12 V)	3.8 gpm (14.3 Lpm)	Weight	7.6 oz

ALWAYS TEST YOUR INSTALLATION FOR LEAKS PRIOR TO POWERING-UP YOUR COMPUTER!

DISCLAIMER: While all efforts have been made to provide the most comprehensive tutorial possible, Swiftech® assumes no liability expressed or implied for any damage(s) occurring to your components as a result of using Swiftech® cooling products, either due to mistake or omission on our part in the above instructions, or due to failure or defect in the Swiftech® cooling products. In addition, Swiftech™ assumes no liability, expressed or implied, for the use of this product, and more specifically for any, and all damages caused by the use of this product to any other device in a personal computer, whether due to product failure, leak, and electrical short, and or electro-magnetic emissions.

WARRANTY: This product is guaranteed for a period of 36 months from date of purchase for defects in material, and workmanship. Guarantee consists of replacing defective parts with new or reconditioned parts. Guarantee is considered void in case of improper use (*)(**), handling or negligence on the part of user. Original invoice showing date and place of purchase is required for exercise of the warranty.

(*) WARNING: DO NOT ATTEMPT TO RUN THE PUMP DRY. THIS WILL CAUSE IMMEDIATE AND PERMANENT DAMAGE TO THE PUMP.
() EXCESSIVE WEAR DUE TO INADEQUATE FLUIDS.**

During this period, they will be repaired or have parts replaced provided that: (I) the product is returned to the agent from which it was purchased; (II) the product has been purchased by the end user and not used for hire purposes; (III) the product has not been misused, handled carelessly, or other than in accordance with any instructions provided with respect to its use. This guarantee does not confer rights other than those expressly set out above and does not cover any claims for consequential loss or damage. This guarantee is offered as an extra benefit and does not affect your statutory rights as a consumer.