



OBSIDIAN VGA WATER-BLOCK

INSTALLATION GUIDE

Thank you for purchasing the Obsidian water-block. This product is intended for expert users. Please consult with a qualified technician for installation. Improper installation may result in damage to your components. Swiftech™ assumes no liability whatsoever, expressed or implied, for the use of this product, nor its installation. The following instructions are subject to change without notice. Please visit our web site at www.swiftech.com for updates.

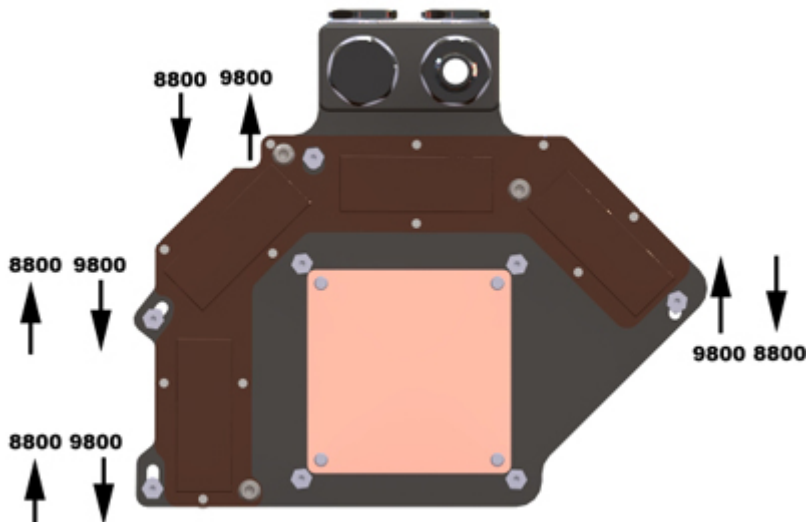
VGA and SLI Compatibility

Model	Single adapter Compatibility	SLi Compatibility
Swiftech Obsidian	GeForce 8800 GT, GTS (G92) GeForce 9800 GTX	Dual with included fittings Triple with ¼" BSPP Link fittings sold separately
Mosfet heatsinks are available and sold separately as noted to the right	 8800 GT/GTS (G92)	 9800 GTX

Critical pre-installation setup – MUST READ

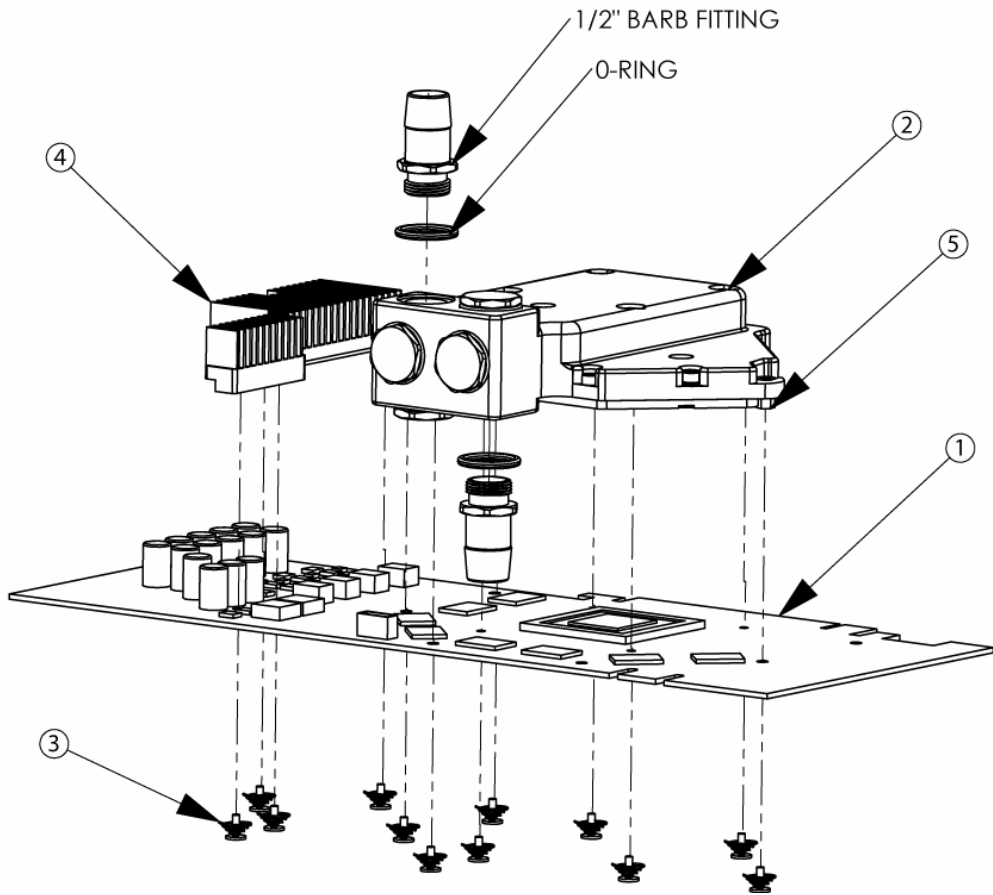
The Obsidian water-block features 4 adjustable standoffs that allow installation with either 8800 (G92) or 9800 GTX series of graphics cards.

Swiftech does not tighten the standoffs, and they are in no particular pre-set position from the factory. So you must position the standoffs to fit your particular card model. Each standoff only has two correct positions: all the way in one direction or all the way in the opposite direction. Lightly unscrew the standoff to allow it to travel in its groove, then push it one way or the other as shown below, and finally fasten it in position with a 3/16 socket or long nose pliers. The following diagram shows the correct standoff positions for each card model.



Installation Diagram

BOM Table			
ITEM NO.	PART NUMBER	DESCRIPTION	QTY.
1	9800GTX-PCB	GRAPHICS CARD	1
2	OBSIDIAN WATER-BLOCK	WATER-BLOCK	1
3	VGA-screw-spring-assy	MOUNTING SCREWS	12
4	9800GTX-HeatSink-R1	OPTIONAL MOSFET COOLER	1
5	M2-Stand-off	M2 FEMALE X M3 STEM STANDOFF	4



Step-by-step instructions



Step 1: Fasten the provided fittings to the Obsidian water-block using a 5/8" "deep socket". Give each fitting a firm lock to prevent it from loosening.

Step 3: Position the Obsidian on your graphic card then flip the card over while keeping the water block mounting holes aligned with the card mounting holes, and fasten the 8 spring-loaded screws progressively & alternatively. Install the Mosfet heatsink following the same procedure if you purchased it with your water-block.

Step 2: Remove the stock cooling solution from the graphics card, then carefully clean off the GPU, the RAM modules and the Mosfets with an electronics degreaser; then squeeze the equivalent of a dime of Arctic Céramique™ thermal compound at the center of GPU and a tiny drop on each of the memory modules and Mosfet chips.

Last Step: Re-install the graphics card to the motherboard, connect the tubing to the Obsidian water-block and secure the tubing with the provided hose-clamps.

Always test your setup extensively for leaks before you energize your system!

IMPORTANT DISCLOSURES While all efforts have been made to provide the most comprehensive tutorial possible, Swiftech assumes no liability expressed or implied for any damage(s) occurring to your components as a result of using Swiftech cooling products, either due to mistake or omission on our part in the enclosed instructions, or due to failure or defect in the Swiftech cooling products. **WARRANTY** Our products are guaranteed for 12 months from the date of delivery to the final user against defects in materials or workmanship. During this period, they will be repaired or have parts replaced provided that: (I) the product is returned to the agent from which it was purchased; (II) the product has been purchased by the end user and not used for hire purposes; (III) the product has not been misused, handled carelessly, or other than in accordance with any instructions provided with respect to its use. This guarantee does not confer rights other than those expressly set out above and does not cover any claims for consequential loss or damage. This guarantee is offered as an extra benefit and does not affect your statutory rights as a consumer.