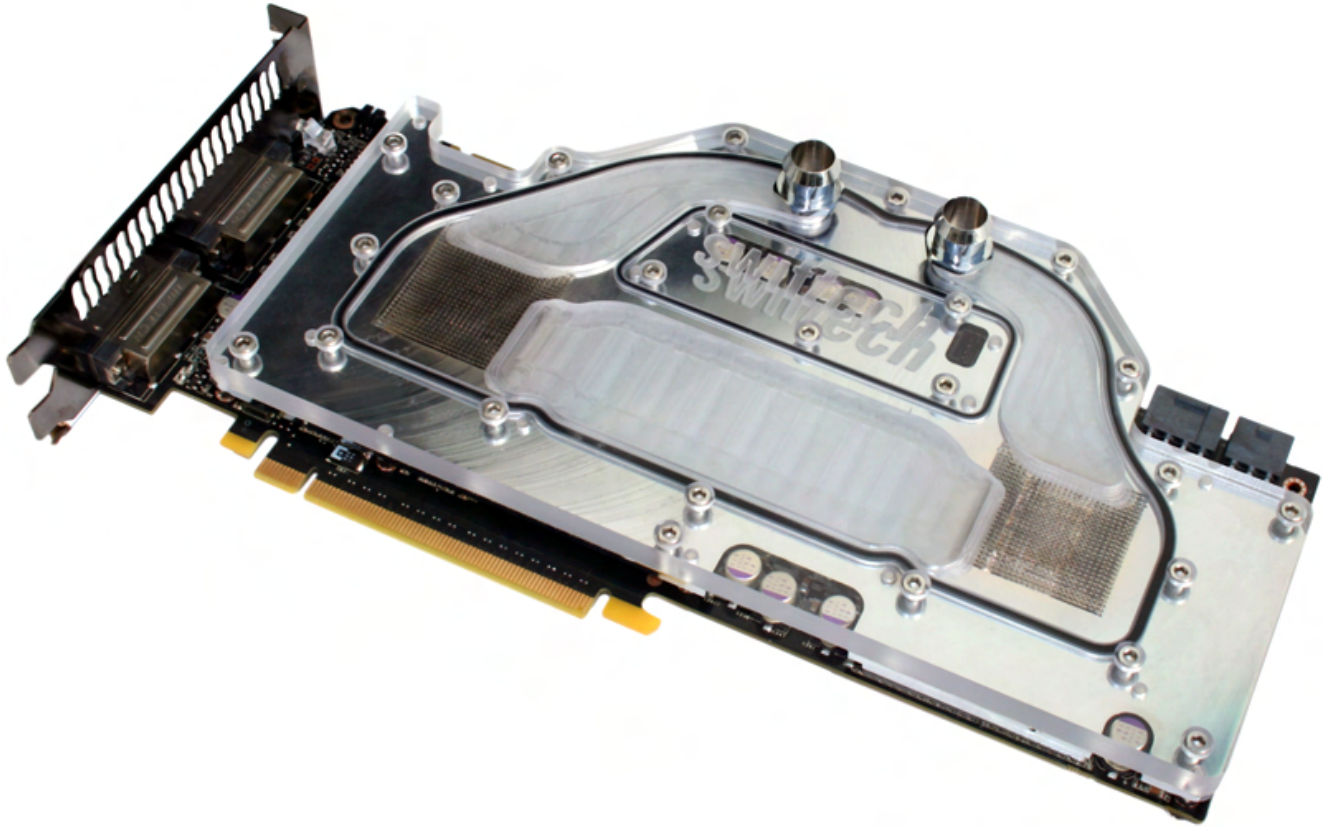


Epsilon Waterblock for Geforce GTX295

INSTALLATION GUIDE



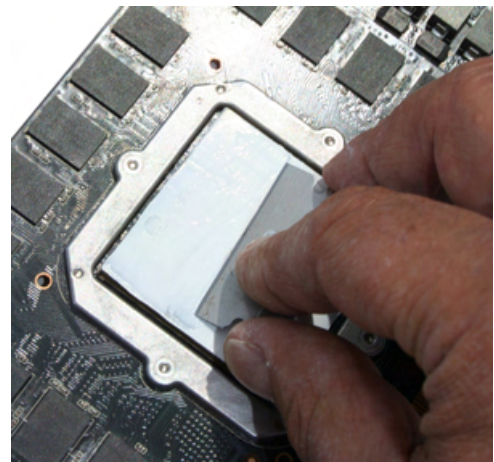
1. Preparing the Graphics Card

Remove the stock cooling solution, and then clean off the GPU heat spreader, memory modules, voltage regulators and I/O chip with alcohol, or preferably with an electronic degreaser such as ArctiClean.

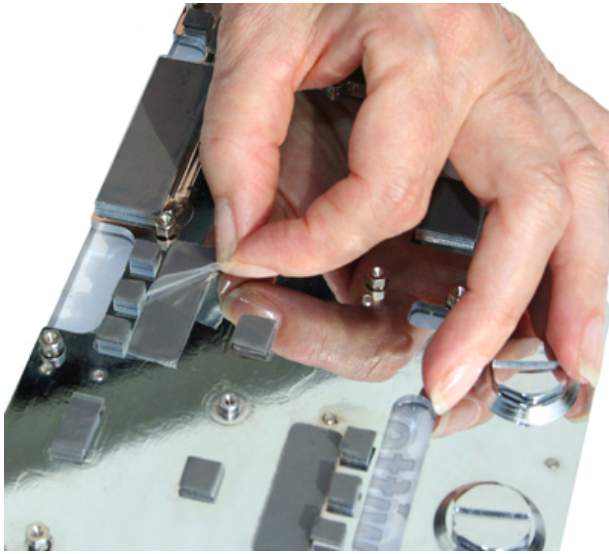
Note: be careful to preserve the thermal pads of the stock cooling solution back-plates, as they will be re-used for installation.



Apply the provided Arctic Céramique thermal paste to the GPU heat spreader as shown above.

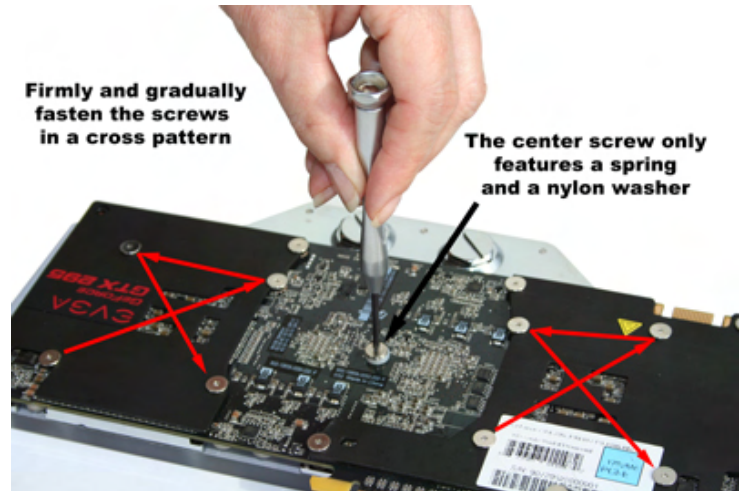


Spread the grease evenly with a razor blade or a piece of plastic (an old credit card for example).



2. PREPARING THE WATERBLOCK

Peel-off the protective plastic sheet from ALL the pre-applied thermal pads, and then mate the water-block to the card, making sure that the holes are properly aligned.



3. FASTENING THE WATERBLOCK TO THE GRAPHICS CARD

Flip the card over, and mate the back-plates to the card. Insert all available screws. Firmly and gradually fasten the mounting screws as shown above. You may need 3 or 4 "passes" to reach a positive screw lock.

IMPORTANT NOTES

- the center screw features a spring and a nylon washer which is necessary for electrical insulation.
- once the card is installed, the temperature of the cores should not exceed approximately 50°C at full load. Significantly higher temps typically indicate that the screws are not adequately tightened. Since the Epsilon uses steel standoffs, the threads are rugged and unlikely to be stripped other than by extreme force. A firm lock of the screws is thus completely acceptable.

INSTALLATION IS NOW COMPLETE!

ALWAYS TEST YOUR BLOCK FOR LEAKS PRIOR TO POWERING UP YOUR SYSTEM!

DISCLAIMER: While all efforts have been made to provide the most comprehensive tutorial possible, Swiftech® assumes no liability expressed or implied for any damage(s) occurring to your components as a result of using Swiftech® cooling products, either due to mistake or omission on our part in the above instructions, or due to failure or defect in the Swiftech® cooling products. In addition, Swiftech™ assumes no liability, expressed or implied, for the use of this product, and more specifically for any, and all damages caused by the use of this product to any other device in a personal computer, whether due to product failure, leak, and electrical short, and or electro-magnetic emissions. **WARRANTY:** Our products are guaranteed for 12 months from the date of delivery to the final user against defects in materials or workmanship. During this period, they will be repaired or have parts replaced provided that: (I) the product is returned to the agent from which it was purchased; (II) the product has been purchased by the end user and not used for hire purposes; (III) the product has not been misused, handled carelessly, or other than in accordance with any instructions provided with respect to its use. This guarantee does not confer rights other than those expressly set out above and does not cover any claims for consequential loss or damage. This guarantee is offered as an extra benefit and does not affect your statutory rights as a consumer.