

MCB-120™ “RADBOX” KIT INSTALLATION GUIDE

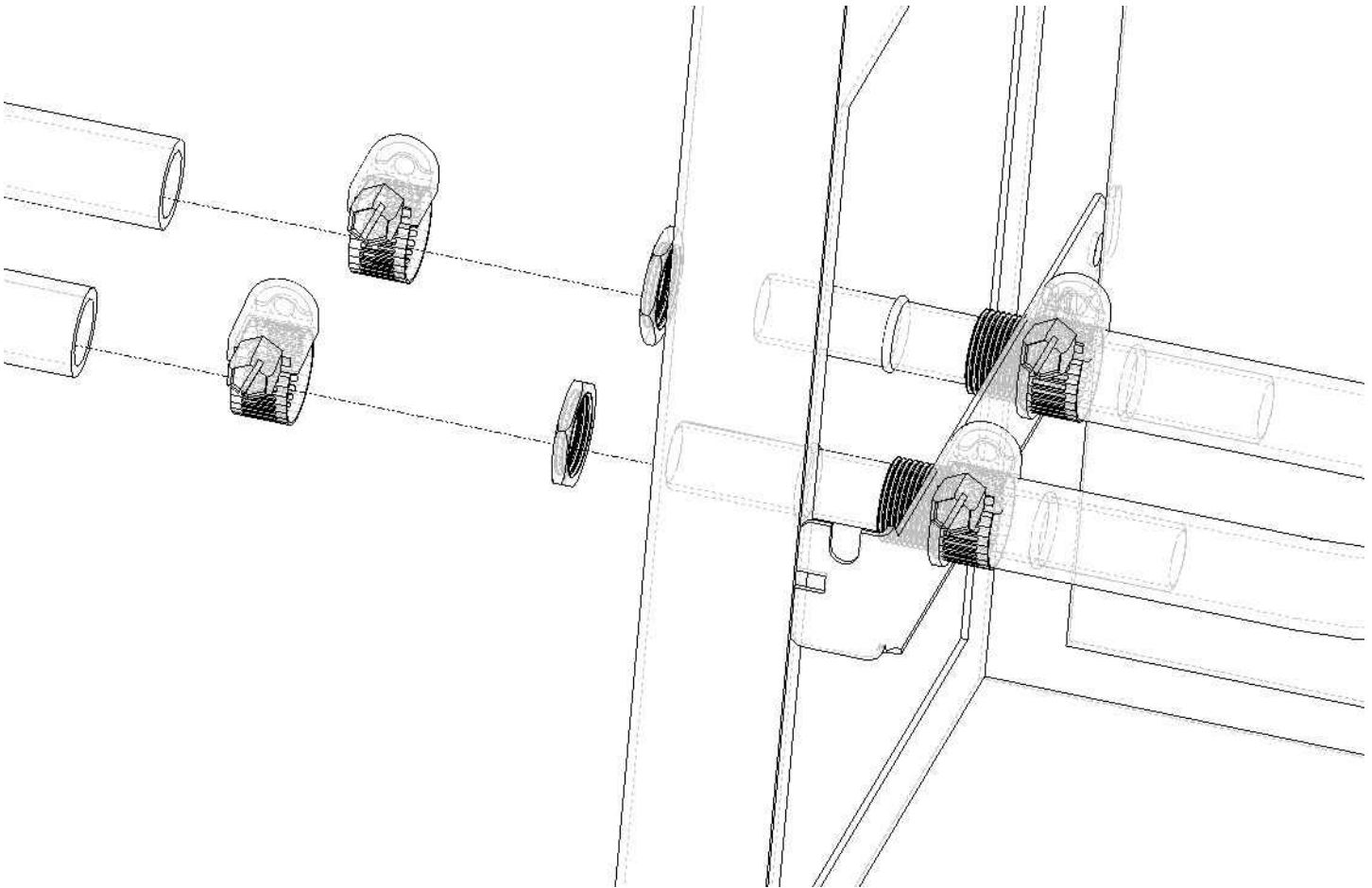
Parts list

Parts	QTY	PARTS	QTY
MCB-120™ Housing assembly	1	Coolsleeves™	20" (*)
Retention hardware (screws, etc..)	1	PCI Pass-Thru kit	1 (*)
1/2" tubing	2' (*)	Worm drive clamps	4 (*)

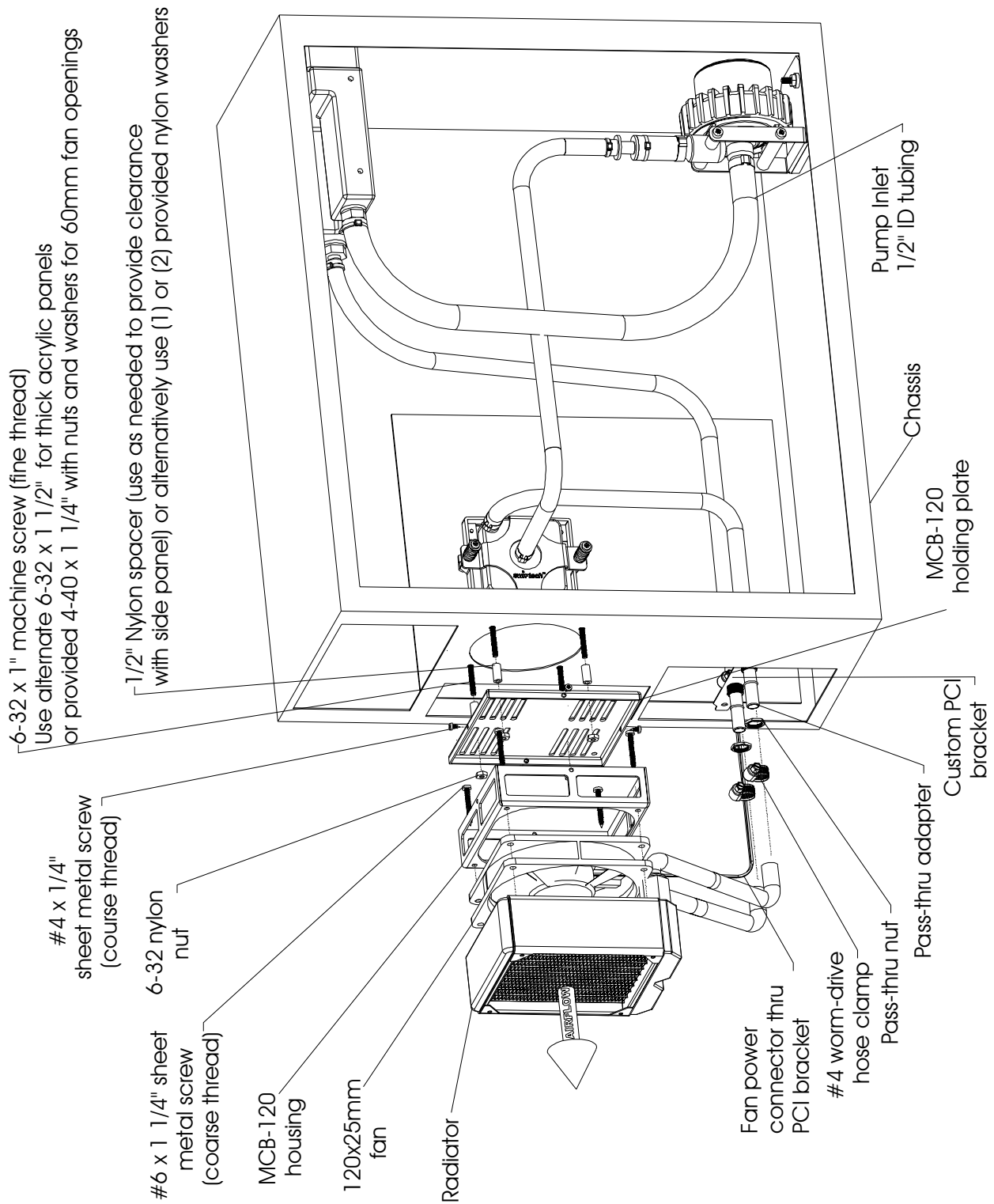
(*) only included with complete kit

1/ PCI pass-thru kit installation

- Insert the PCI bracket into an available opening, and secure it to the chassis.
- Insert your fan electrical connector through the slotted hole of the PCI bracket now. Only 3-pin connectors (the type that connect to the motherboard) are small enough to pass through the slotted hole. 4-pin Molex connectors (the type that connect to your power supply) will require that the terminals be removed from the Molex housing first.
- From inside of the chassis, insert the pass-thru adapters through each hole of the PCI bracket. The threaded portion of the adapters should be exposed outside of the case.
- Screw the nuts to the adapters. The nuts are designed to slightly overlap the edges of the PCI chassis opening, to provide a more secure installation.



2/ Housing / fan & radiator installation: please refer to diagram page 2.



IMPORTANT DISCLOSURES

While all efforts have been made to provide the most comprehensive tutorial possible, Swiftech assumes no liability expressed or implied for any damage(s) occurring to your components as a result of using Swiftech cooling products, either due to mistake or omission on our part in the above instructions, or due to failure or defect in the Swiftech cooling products.

WARRANTY

Our products are guaranteed for 12 months from the date of delivery to the final user against defects in materials or workmanship. During this period, they will be repaired or have parts replaced provided that: (I) the product is returned to the agent from which it was purchased; (II) the product has been purchased by the end user and not used for hire purposes; (III) the product has not been **misused** (*), handled carelessly, or other than in accordance with any instructions provided with respect to its use. This guarantee does not confer rights other than those expressly set out above and does not cover any claims for consequential loss or damage. This guarantee is offered as an extra benefit and does not affect your statutory rights as a consumer.