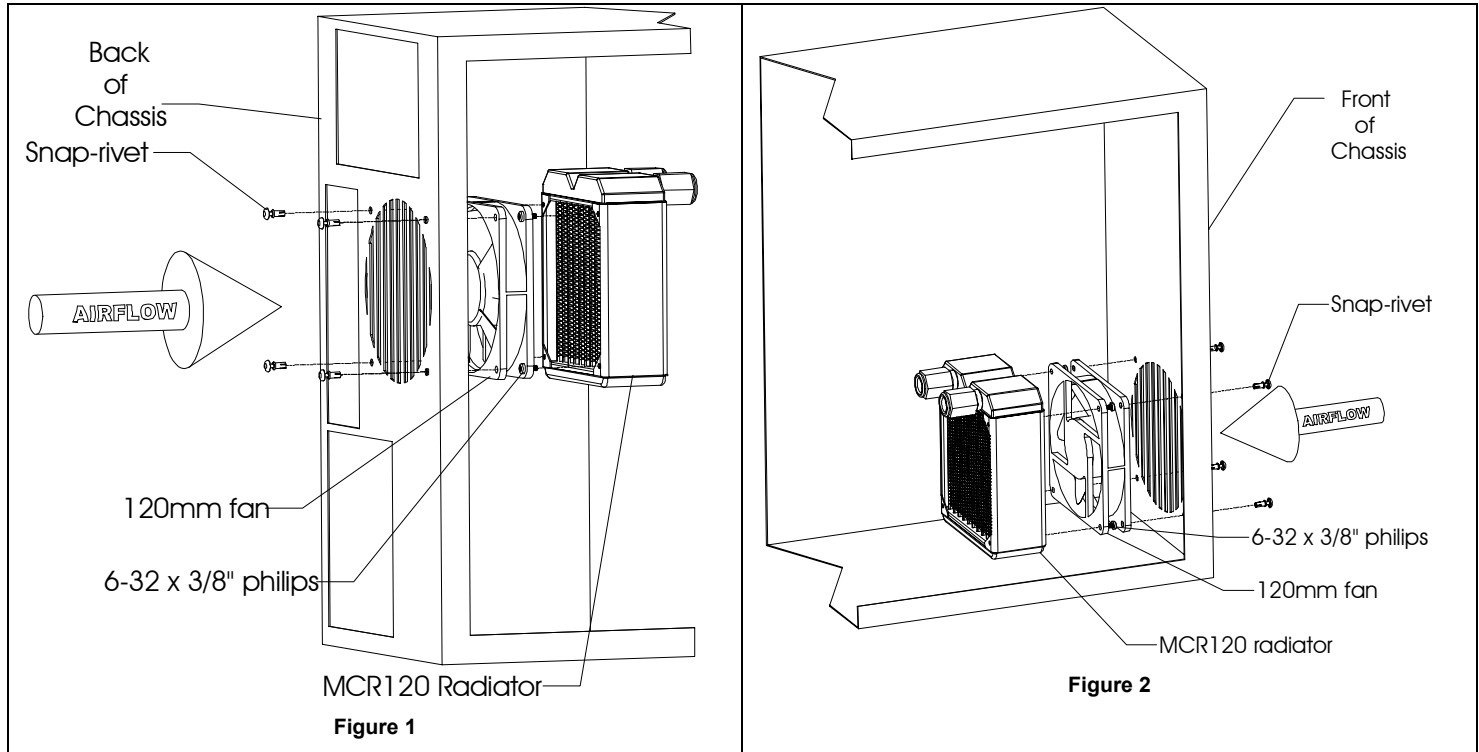




MCR120-F™ RADIATOR INSTALLATION GUIDE

Packing list

MCR120 radiator	1	Tube inserts	2
Snap-rivet	4	120x25mm fan	1
6-32" x 3/8" Philips screw	4	Quick-connect fittings	2



Preamble

The MCR120-F™ ships with the fan pre-assembled to the radiator. It has been configured so that the fan will draw fresh air from outside of the chassis. This configuration is preferred to optimize cooling of the CPU. In effect, if the fan flow direction were reversed, it would use heated air inside of the chassis, which is usually 3°C (at best) and up to 10°C hotter than that of the ambient air outside of the chassis.

1. Installation

Depending where a 120mm fan opening is available, the MCR120-F™ can be installed as shown in Figure 1 (back of the chassis), or Figure 2 (front of the chassis). Due to the wide variety of chassis configurations, Swiftech cannot guarantee that this assembly will bolt into *any* chassis without some modifications. However, an external mounting solution is optionally available with the [MCB120™](#) "Radbox" which will usually allow a plug-and-play installation with most desktop computers.

2. Bleeding

For bleeding purposes, the preferred radiator orientation is with inlet and outlet pointing up as shown above. Nonetheless, the radiator can also be installed at 90° or 180°. In such cases, simply rotate the radiator back upwards to allow the air trapped inside to escape during the filling and bleeding process. For this reason, it might be more convenient to fasten the radiator to the chassis *after* the circuit has been fully filled and bled.

3. Using quick-connect fittings

If you are using soft vinyl tubing, you must also use the provided tube inserts. Cut the extremity of the tube **squarely**, and fully engage the tube insert into the tube as shown in Figure 3.



Figure 3

4. Tube insertion

TIP! Rubbing the extremity of the tube with a little bit of liquid soap will greatly facilitate insertion of the tube into the quick-connect fitting.

Insert the tube into the quick-connect fitting. The tube will go in freely for the first ¼” and you will then feel a resistance: this is the O-ring inside of the fitting. Push *through* the O-ring by twisting the tube back-and-forth for another ½” until the tube reaches the tube-stop at the bottom of the fitting.

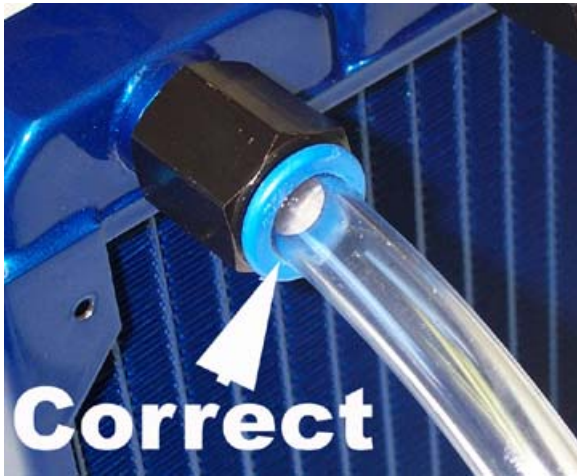


Figure 4



Figure 5

5. Tube removal

Firmly grip the tube in the cradle formed by three fingers, and push against the blue collet with thumb and index fingers. This will disengage the tube from the fitting. Correct position of the hand and fingers is shown in Figure 6.

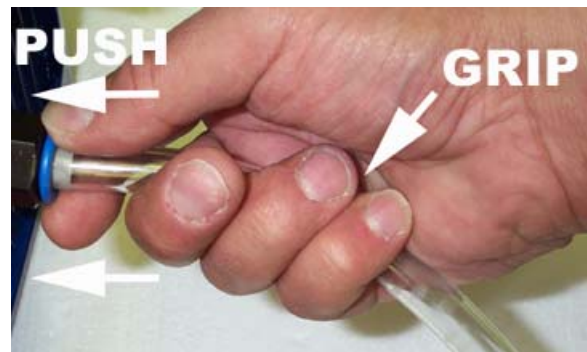


Figure 6

6. Specifications

Radiator Assembly Dimensions - Part # MCR120-FB					
Thickness	Height	Core width	Inlet Outlet tube size		
0.98" (25mm)	5.9" (157mm)	5.00" (133mm)	1/2" (tube OD) quick connect adapters included		
Fan Specifications - Part # WFB1212M					
Voltage (V)	Current (mA)	Speed (RPM)	Volume (CFM)	Static pressure (InH2O)	Sound Noise (dbA)
7.0-13.8	.20	2100	72.4	.134	34

IMPORTANT DISCLOSURES

While all efforts have been made to provide the most comprehensive tutorial possible, Swiftech assumes no liability expressed or implied for any damage(s) occurring to your components as a result of using Swiftech cooling products, either due to mistake or omission on our part in the above instructions, or due to failure or defect in the Swiftech cooling products.

WARRANTY

Our products are guaranteed for 12 months from the date of delivery to the final user against defects in materials or workmanship. During this period, they will be repaired or have parts replaced provided that: (I) the product is returned to the agent from which it was purchased; (II) the product has been purchased by the end user and not used for hire purposes; (III) the product has not been **misused** (*), handled carelessly, or other than in accordance with any instructions provided with respect to its use. This guarantee does not confer rights other than those expressly set out above and does not cover any claims for consequential loss or damage. This guarantee is offered as an extra benefit and does not affect your statutory rights as a consumer.