



## MAELSTROM 5 1/4" DUAL BAY RESERVOIR

### Installation guide

#### What is Included in the box depending on the model:

Qty	Item/Part Number	Maelstrom	Maelstrom-SPH	Maelstrom-DPH	Maelstrom-35X	Maelstrom-35X2
1	Maelstrom Reservoir including: <ul style="list-style-type: none"><li>(1) Face plate</li><li>(2) Side brackets &amp; screws</li><li>(1) each temperature controller, probe, display and cable w/molex 4-pin connector</li><li>(1) each acrylic reservoir with fill-cap &amp; o-ring, foam insert, s/s mesh, G 1/4 link bolt &amp; o-ring, G 1/4 outlet conduit</li><li>(2) each G 1/4 plugs</li></ul>	X	X	X	X	X
4	M3 screws	X	X	X	X	X
1	3mm UV Led & cable w/molex 3-pin connector	X	X	X	X	X
2	1/2" barb fittings	X	X	X	X	X
2	Hose clamps	X	X	X	X	X
2	Side bracket to pump housing screws	X	X	X	X	X
1	MCP35X-H Pump Housing	-	X	-	-	-
4	Pump installation screws	-	X	-	-	-
1	MCP35X2-H Pump Housing	-	-	X	-	-
8	Pump installation screws	-	-	X	-	-
1	MCP35X single pump	-	-	-	X	-
1	MCP35X2 dual pumps	-	-	-	-	X
1	PWM Splitter cable	-	-	-	-	X

#### **I. Maelstrom Bay reservoir installation**

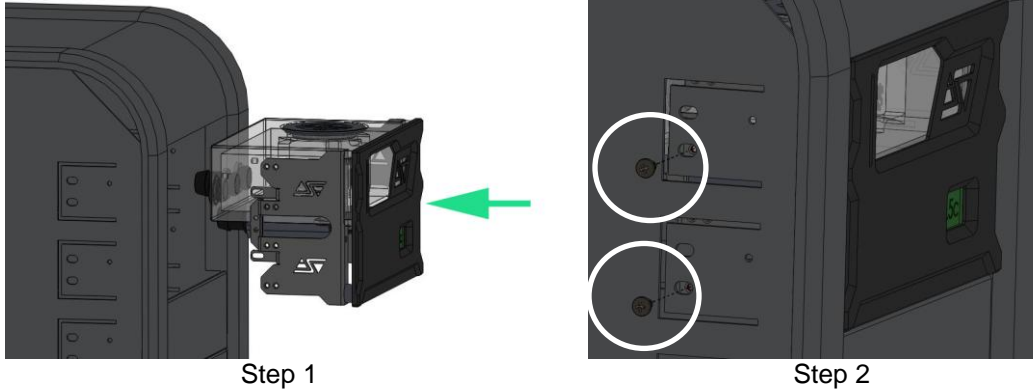
##### Warning!

Incorrect installation of the fittings may permanently damage the thread of the reservoir ports, and is not covered under our warranty. Please note that fittings should screw freely into a port. Should you feel any resistance in the first turn when beginning to fasten a fitting, **do not attempt to force it!** If this happens, then back-off the fitting entirely, and screw it back in while making sure that it is being inserted perfectly perpendicular to the port thread.

- Fittings and plugs fastening torque: using a 5/8" socket or a flat wrench, the correct torque in acrylic material is a 1/4 turn past the point where the fitting has mated (finger tight) with the reservoir surface.
- Fill-cap fastening torque: finger-tight, or a mild lock with a flat screw driver is sufficient.

#### **1. Installation to the chassis**

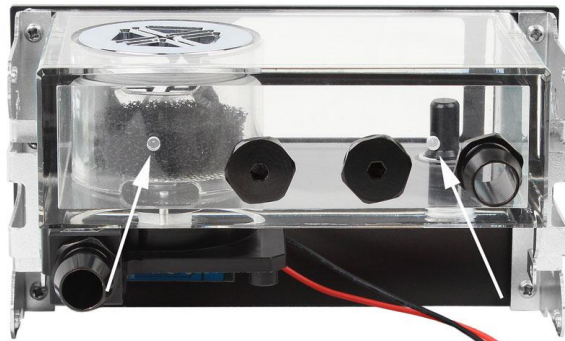
The Maelstrom bay reservoir shares the same form factor as internal CD and DVD writers and thus is installed in the same fashion: simply slide it into your chassis from the front, and use the provided M3 screws to fix it in place.



## 2. Installation tips

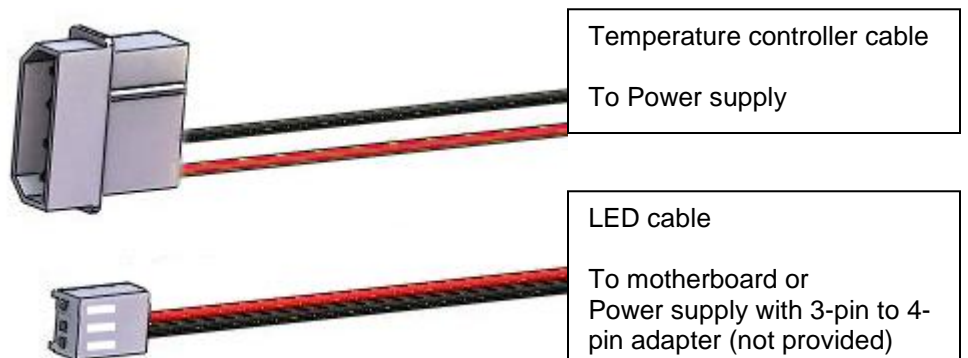
- Always secure your fittings to the reservoir prior to install it into the chassis as it will be easier to lock them properly in place.
- Always make sure that you have sufficient slack in the tubing coming from your loop so that you can pull the Maelstrom and access the fill-port from the front in order to fill it up with coolant.

## 3. LED installation



Apply a small drop of cyanoacrylate type of glue (Loctite, Superglue, Krazy glue) (not provided) to the LED body, and immediately insert it in one of the desired holes. We recommend testing the illumination (with coolant) of your preferred location prior to gluing the LED.

## 4. Electrical installation



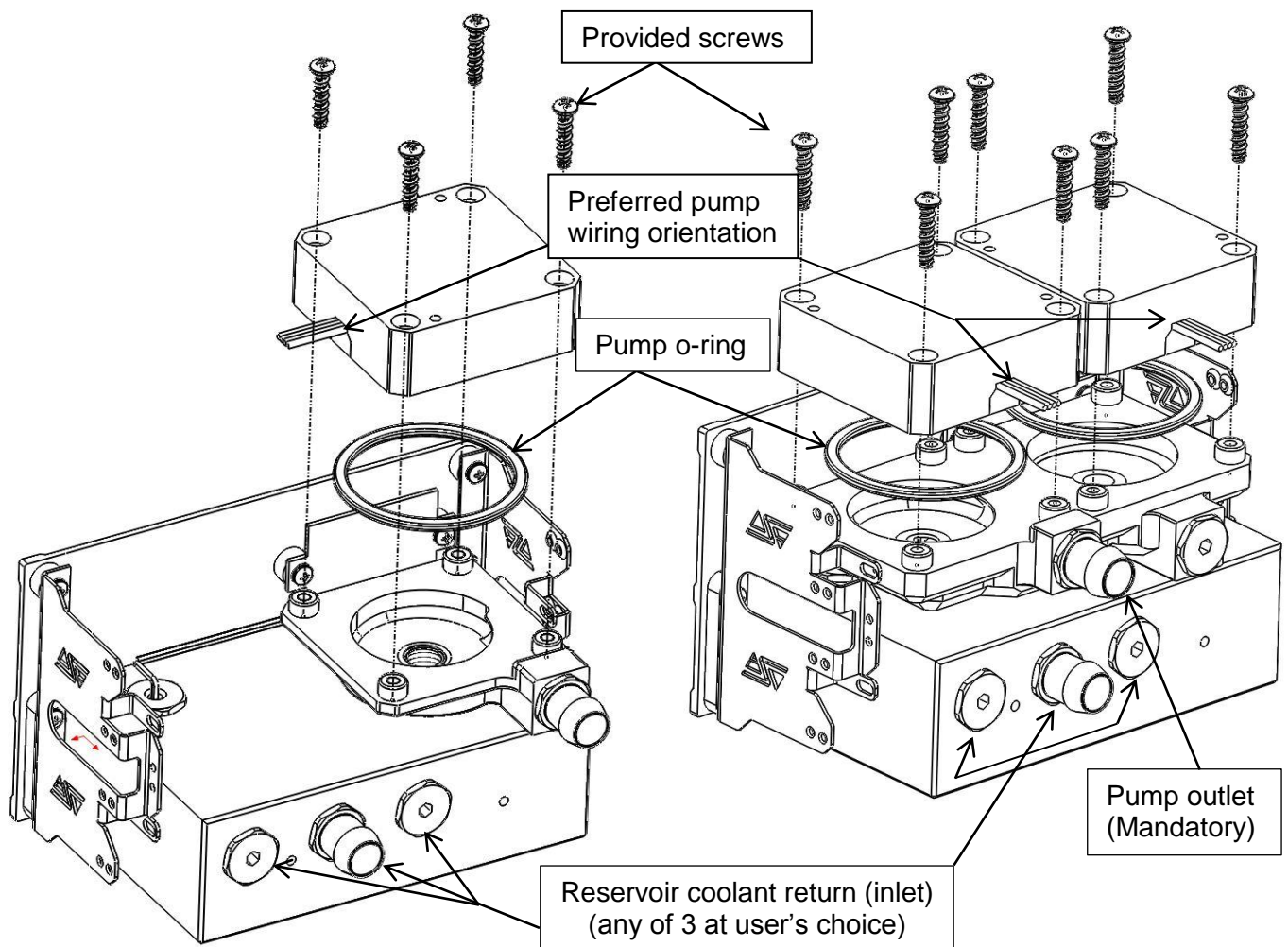
## 5. Coolant: precautions for use

- The recommended coolant is Swiftech's HydrX or Hydrx PM. Swiftech's [product warranty](#) does not cover the use of 3rd-party coolants.
- The use of coloring additives and/or UV dyes containing particulate fillers may damage your pump bearing and may void your pump warranty.
- The use of any additive or coolant containing alcohol is prohibited and dangerous: it will result in permanent damage to your acetal reservoir and may result in catastrophic leaks.

## II. Pump Installation (Models Maelstrom-SPH and DPH)

Install the pump(s) to the housing using the schematics below

- Do not forget to install the rubber o-ring that came with your pump; failure to do so will result in catastrophic leak
- Make sure to orient the pump so that its wiring exits in the most convenient fashion.
- Tighten the provided screws gradually and in a cross pattern – Lock firmly until the body of the pump(s) mate with the housing.



**Model Maelstrom-SPH with single pump housing**

**Model Maelstrom-DPH with dual pump housing**



### III. Pump connectivity, specifications and warranty information

Please refer to the enclosed MCP35X or MCP35X2 installation guide.

**ALWAYS TEST YOUR INSTALLATION FOR LEAKS PRIOR TO POWERING-UP YOUR COMPUTER!**

**DISCLAIMER:** While all efforts have been made to provide the most comprehensive tutorial possible, Swiftech® assumes no liability expressed or implied for any damage(s) occurring to your components as a result of using Swiftech® cooling products, either due to mistake or omission on our part in the above instructions, or due to failure or defect in the Swiftech® cooling products. In addition, *Swiftech™ assumes no liability, expressed or implied, for the use of this product, and more specifically for any, and all damages caused by the use of this product to any other device in a personal computer, whether due to product failure, leak, and electrical short, and or electro-magnetic emissions.*

**WARRANTY:** This product is guaranteed for a period of 12 months from date of purchase for defects in material, and workmanship. Guarantee consists of replacing defective parts with new or reconditioned parts. Guarantee is considered void in case of improper use <sup>(\*)</sup><sup>(\*\*)</sup>, handling or negligence on the part of user. Original invoice showing date and place of purchase is required for exercise of the warranty.

**(\*) WARNING: DO NOT ATTEMPT TO RUN THIS PUMP DRY. THIS WILL CAUSE IMMEDIATE AND PERMANENT DAMAGE TO THE PUMP.**  
**(\*\*) EXCESSIVE WEAR DUE TO INADEQUATE FLUIDS.**

During this period, they will be repaired or have parts replaced provided that: (I) the product is returned to the agent from which it was purchased; (II) the product has been purchased by the end user and not used for hire purposes; (III) the product has not been misused, handled carelessly, or other than in accordance with any instructions provided with respect to its use. This guarantee does not confer rights other than those expressly set out above and does not cover any claims for consequential loss or damage. This guarantee is offered as an extra benefit and does not affect your statutory rights as a consumer.